

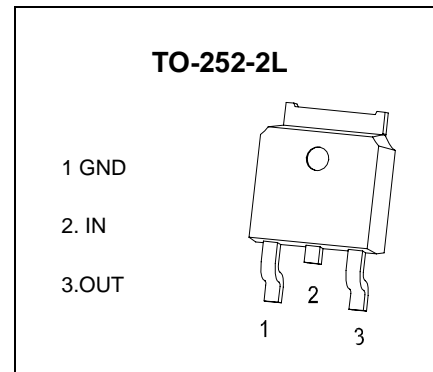


TO-252-2L Encapsulate Voltage Regulators

CJ7912 Three-terminal negative voltage regulator

FEATURES

- Maximum output current
 $I_{OM}: 1.5\text{ A}$
- Output voltage
 $V_O: -12\text{ V}$
- Continuous total dissipation
 $P_D: 1.25\text{ W}$ ($T_a = 25\text{ }^\circ\text{C}$)



ABSOLUTE MAXIMUM RATINGS (Operating temperature range applies unless otherwise specified)

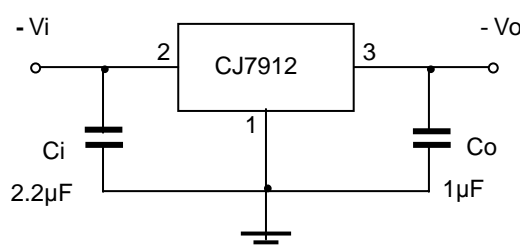
| Parameter | Symbol | Value | Unit |
|---|-----------------|----------|--------------------|
| Input Voltage | V_i | -30 | V |
| Thermal Resistance from Junction to Air | $R_{\theta JA}$ | 100 | $^\circ\text{C/W}$ |
| Operating Junction Temperature Range | T_{OPR} | 0~+150 | $^\circ\text{C}$ |
| Storage Temperature Range | T_{STG} | -65~+150 | $^\circ\text{C}$ |

ELECTRICAL CHARACTERISTICS AT SPECIFIED VIRTUAL JUNCTION TEMPERATURE ($V_i = -19\text{ V}, I_o = 500\text{ mA}, C_i = 2.2\text{ }\mu\text{F}, C_o = 1\text{ }\mu\text{F}$, unless otherwise specified)

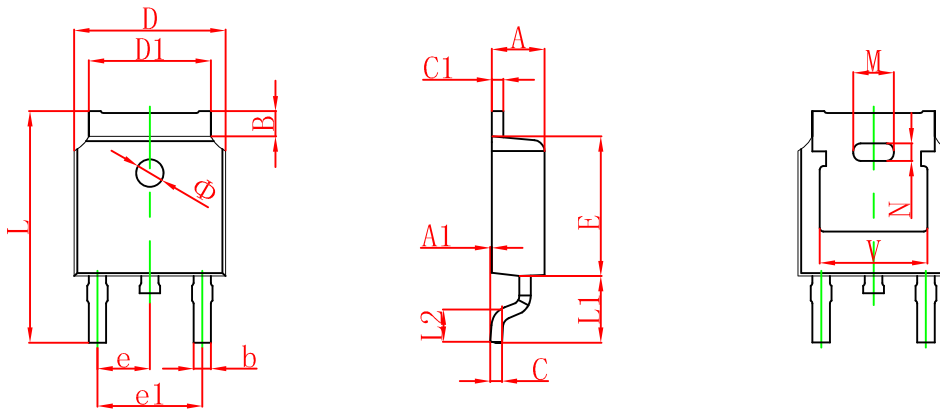
| Parameter | Symbol | Test conditions | Min | Typ | Max | Unit |
|--------------------------|-------------------------|---|------------------------|-------|--------|----------------------------|
| Output Voltage | V_o | 25°C | -11.52 | -12 | -12.48 | V |
| | | $-14.5\text{ V} \leq V_i \leq -27\text{ V}, I_o = 5\text{ mA} - 1\text{ A}$ | 0-125 $^\circ\text{C}$ | -11.4 | -12 | -12.6 |
| Load Regulation | ΔV_o | $I_o = 5\text{ mA} - 1.5\text{ A}$ | 25°C | 15 | 200 | mV |
| | | $I_o = 250\text{ mA} - 750\text{ mA}$ | 25°C | 5 | 75 | mV |
| Line Regulation | ΔV_o | $-14.5\text{ V} \leq V_i \leq -30\text{ V}$ | 25°C | 5 | 80 | mV |
| | | $-16\text{ V} \leq V_i \leq -22\text{ V}$ | 25°C | 3 | 30 | mV |
| Quiescent Current | I_q | 25°C | | 2 | 3 | mA |
| Quiescent Current Change | ΔI_q | $-14.5\text{ V} \leq V_i \leq -30\text{ V}$ | 0-125 $^\circ\text{C}$ | | 0.5 | mA |
| | | $5\text{ mA} \leq I_o \leq 1\text{ A}$ | 0-125 $^\circ\text{C}$ | | 0.5 | mA |
| Output Noise Voltage | V_N | $10\text{ Hz} \leq f \leq 100\text{ KHz}$ | 25°C | 300 | | $\mu\text{V}/V_o$ |
| Output Voltage Drift | $\Delta V_o / \Delta T$ | $I_o = 5\text{ mA}$ | 0-125 $^\circ\text{C}$ | -0.8 | | $\text{mV}/^\circ\text{C}$ |
| Ripple Rejection | RR | $-15\text{ V} \leq V_i \leq -25\text{ V}, f = 120\text{ Hz}$ | 0-125 $^\circ\text{C}$ | 54 | 60 | dB |
| Dropout Voltage | V_d | $I_o = 1\text{ A}$ | 25°C | 1.1 | | V |
| Peak Current | I_{pk} | 25°C | | 2.1 | | A |

* Pulse test.

TYPICAL APPLICATION

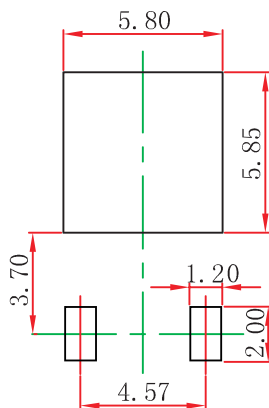


TO-252(4R)-2L Package Outline Dimensions



| Symbol | Dimensions In Millimeters | | Dimensions In Inches | |
|--------|---------------------------|--------|----------------------|-------|
| | Min. | Max. | Min. | Max. |
| A | 2.200 | 2.380 | 0.087 | 0.094 |
| A1 | 0.000 | 0.100 | 0.000 | 0.004 |
| B | 0.800 | 1.400 | 0.031 | 0.055 |
| b | 0.710 | 0.810 | 0.028 | 0.032 |
| c | 0.460 | 0.560 | 0.018 | 0.022 |
| c1 | 0.460 | 0.560 | 0.018 | 0.022 |
| D | 6.500 | 6.700 | 0.256 | 0.264 |
| D1 | 5.130 | 5.460 | 0.202 | 0.215 |
| E | 6.000 | 6.200 | 0.236 | 0.244 |
| e | 2.286 TYP. | | 0.090 TYP. | |
| e1 | 4.327 | 4.727 | 0.170 | 0.186 |
| M | 1.778REF. | | 0.070REF. | |
| N | 0.762REF. | | 0.018REF. | |
| L | 9.800 | 10.400 | 0.386 | 0.409 |
| L1 | 2.9REF. | | 0.114REF. | |
| L2 | 1.400 | 1.700 | 0.055 | 0.067 |
| V | 4.830 REF. | | 0.190 REF. | |
| Φ | 1.100 | 1.300 | 0.043 | 0.051 |

TO-252(4R)-2L Suggested Pad Layout



Note:

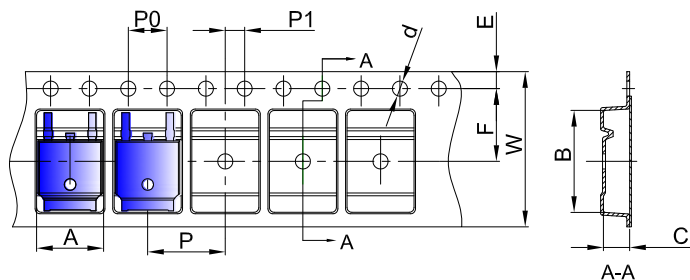
1. Controlling dimension: in millimeters.
2. General tolerance: $\pm 0.05\text{mm}$.
3. The pad layout is for reference purposes only.

NOTICE

JCET reserve the right to make modifications, enhancements, improvements, corrections or other changes without further notice to any product herein. JCET does not assume any liability arising out of the application or use of any product described herein.

To-252(4R)-2L Tape and Reel

TO-252 Embossed Carrier Tape

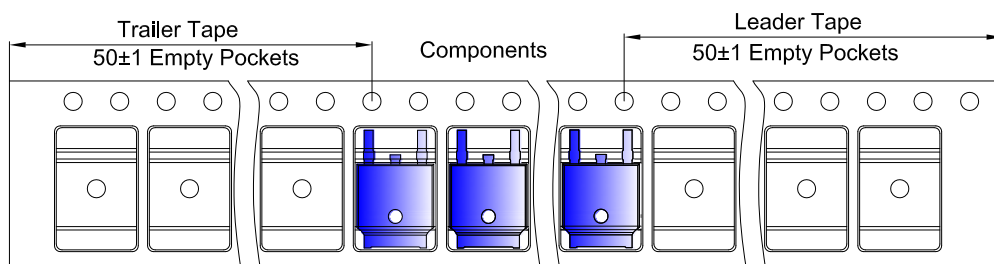


Packaging Description:

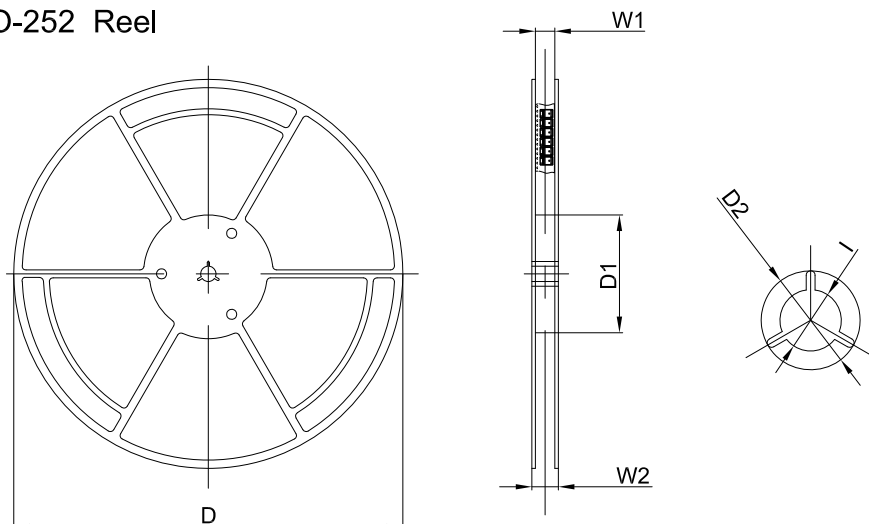
TO-252 parts are shipped in tape. The carrier tape is made from a dissipative (carbon filled) polycarbonate resin. The cover tape is a multilayer film (Heat Activated Adhesive in nature) primarily composed of polyester film, adhesive layer, sealant, and anti-static sprayed agent. These reeled parts in standard option are shipped with 25,00 units per 13" or 33.0 cm diameter reel. The reels are clear in color and is made of polystyrene plastic (anti-static coated).

| Dimensions are in millimeter | | | | | | | | | | |
|------------------------------|------|-------|------|-------|------|------|------|------|------|-------|
| Pkg type | A | B | C | d | E | F | P0 | P | P1 | W |
| TO-252 | 6.90 | 10.50 | 2.70 | Ø1.55 | 1.75 | 7.50 | 4.00 | 8.00 | 2.00 | 16.00 |

TO-252 Tape Leader and Trailer



TO-252 Reel



| Dimensions are in millimeter | | | | | | |
|------------------------------|--------|--------|--------|-------|-------|--------|
| Reel Option | D | D1 | D2 | W1 | W2 | I |
| 13" Dia | 330.00 | 100.00 | Ø21.00 | 16.40 | 21.00 | Ø13.00 |

| REEL | Reel Size | Box | Box Size(mm) | Carton | Carton Size(mm) | G.W.(kg) |
|-----------|-----------|-----------|--------------|------------|-----------------|----------|
| 2,500 pcs | 13inch | 2,500 pcs | 340×336×29 | 25,000 pcs | 353×346×365 | |